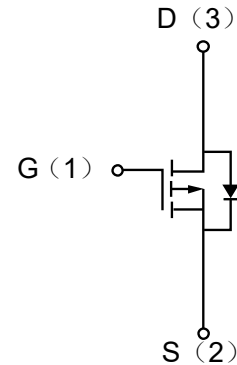


Description

The enhancement mode MOS is extremely high density cell and low on-resistance.

MOSFET Product Summary		
$V_{DS}(V)$	$R_{DS(on)}(m\Omega)$	$I_D(A)$
-30	67 @ $V_{GS}=-4.5V$	-4.3



Absolute maximum rating@25°C

Rating	Symbol	Value	Unit
Drain-Source Voltage	V_{DS}	-30	V
Gate-Source Voltage	V_{GS}	± 20	V
Continuous Drain Current	I_D	-4.3	A
Pulsed Drain Current	I_{DM}	-20	A
Maximum Power Dissipation	P_D	1.5	W
Junction and Storage Temperature Range	T_J, T_{STG}	-55 to +150	°C

Thermal resistance

Parameter	Symbol	Value	Unit
Thermal Resistance, Junction-to-Ambient	$R_{\theta JA}$	84	°C/W

Electrical characteristics per line@25°C (unless otherwise specified)

Parameter	Symbol	Conditions	Min.	Typ.	Max.	Unit
Drain-Source Breakdown Voltage	BV_{DSS}	$I_D = -250\mu A, V_{GS} = 0V$	-30	-33	-	V
Zero Gate Voltage Drain Current	I_{DSS}	$V_{DS} = -24V, V_{GS} = 0V$	-	-	-1.0	μA
Gate-to-Source Forward Leakage	I_{GSS}	$V_{GS} = \pm 20V$	-	-	± 100	nA
Diode Forward Voltage	V_{SD}	$V_{GS} = 0V, I_S = -1A$			-1.2	V
Gate Threshold Voltage	$V_{GS(th)}$	$V_{DS} = V_{GS}, I_D = -250\mu A$	-1	-1.5	-3	V
Static Drain-Source On-Resistance	$R_{DS(ON)}$	$V_{GS} = -10V, I_D = -4A$	-	50	60	m Ω
		$V_{GS} = -4.5V, I_D = -4A$	-	67	90	
Forward Trans conductance	g_{FS}	$V_{DS} = -5V, I_D = -4A$	5.5	-	-	S
Total Gate Charge	Q_g	$I_D = -4A, V_{DS} = -15V, V_{GS} = -10V$	-	14		nC
Gate-to-Source Charge	Q_{gs}		-	3.1		
Gate-to-Drain(Miller) Charge	Q_{gd}		-	3		
Input Capacitance	C_{ISS}	$V_{GS} = 0V, V_{DS} = -15V, f = 1MHz$	-	700		pF
Output Capacitance	C_{DSS}		-	120		pF
Reverse Transfer Capacitance	C_{RSS}		-	75		pF
Turn-On Delay Time	$t_{d(on)}$	$V_{DD} = -15V, V_{GS} = -10V, R_L = 3.6\Omega, R_{GEN} = 3\Omega$	-	9	-	ns
Rise Time	t_r		-	5	-	
Turn-Off Delay Time	$t_{d(off)}$		-	28	-	
Fall Time	t_f		-	13.5	-	

Typical Characteristics

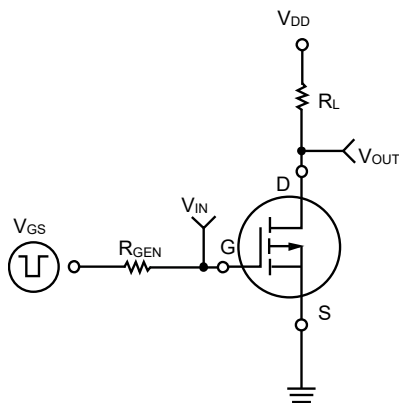


Fig 1. Switching Test Circuit

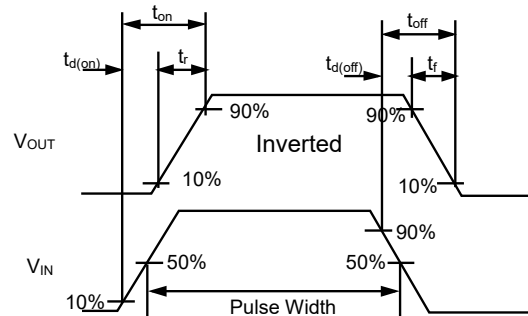


Fig 2. Switching Waveforms

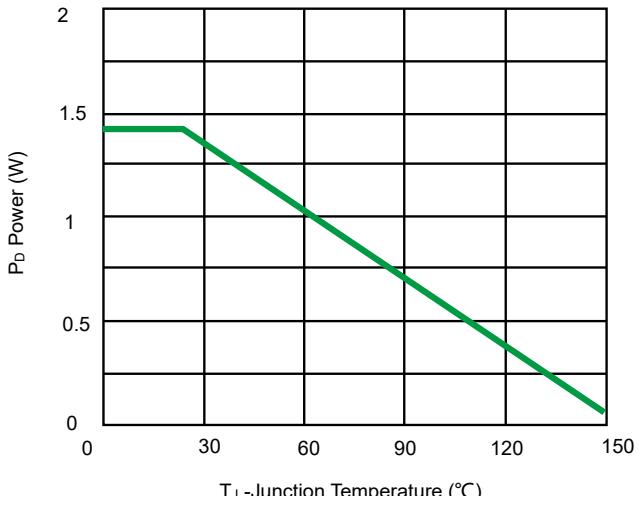


Fig 3. Power Dissipation

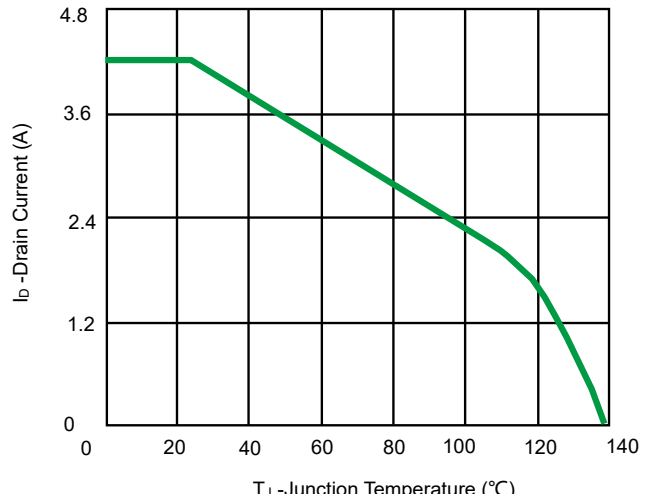


Fig 4. Drain Current

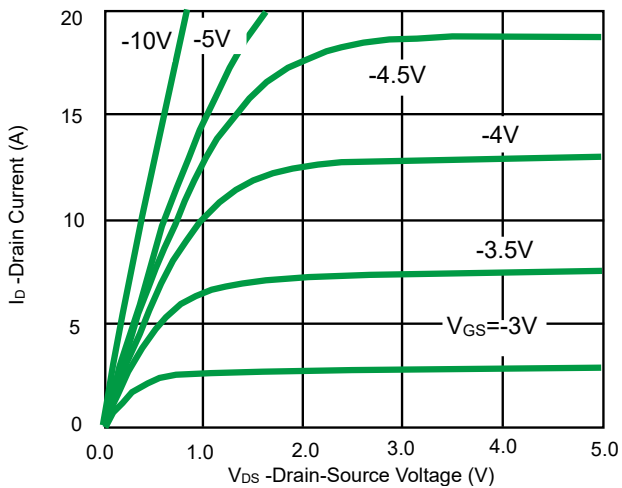


Fig 5. Output characteristics

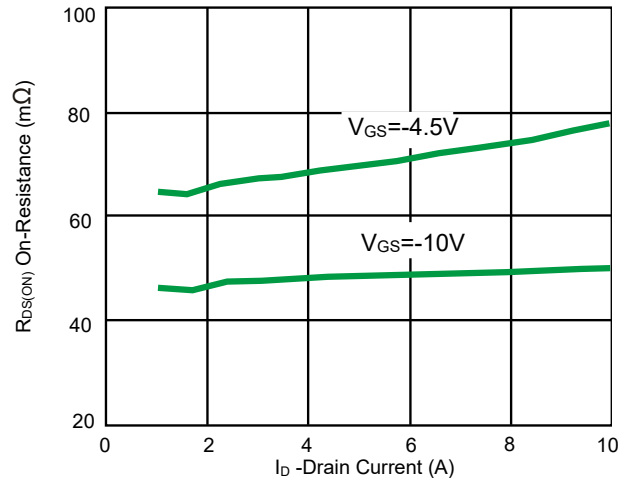


Fig 6. Drain-Source On-Resistance

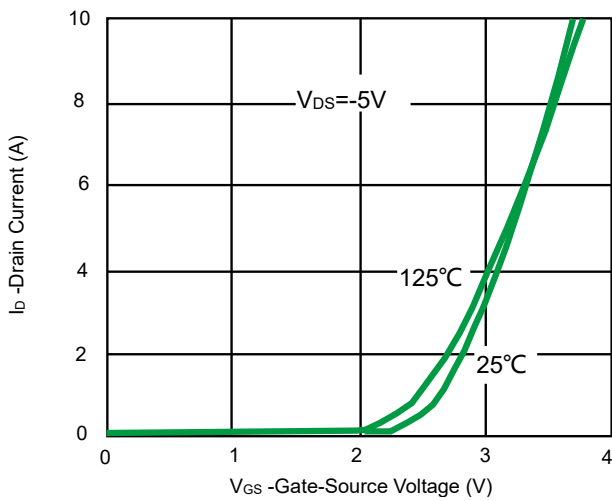


Fig 7. Transfer Characteristics

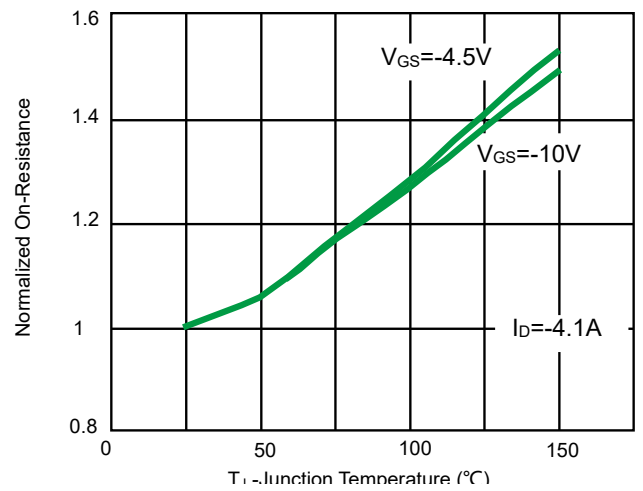


Fig 8. Drain-Source On-Resistance

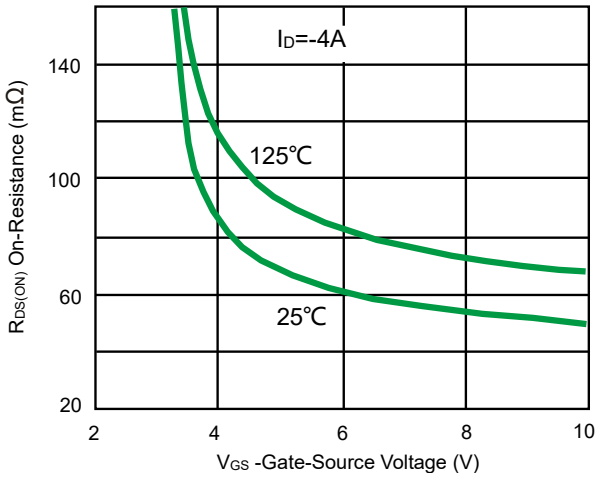


Fig 9. $R_{DS(ON)}$ vs. V_{GS}

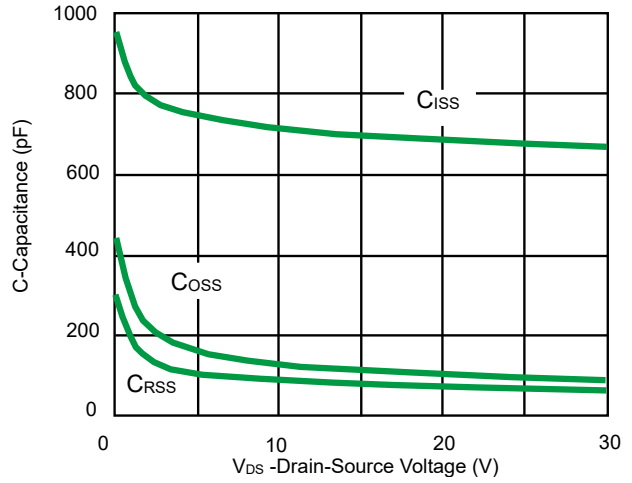


Fig 10. Capacitance vs. V_{DS}

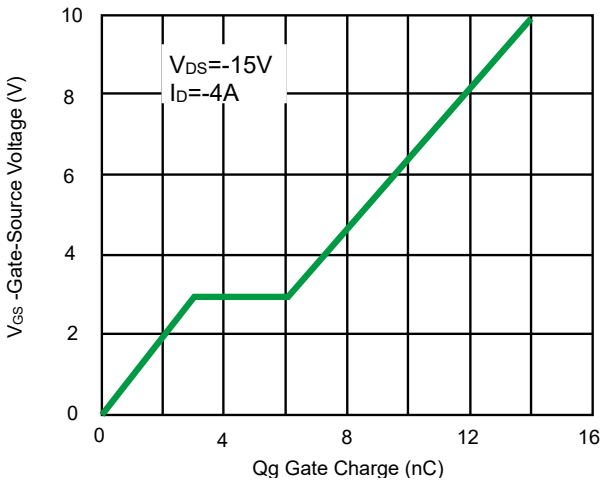


Fig 11. Gate Charge

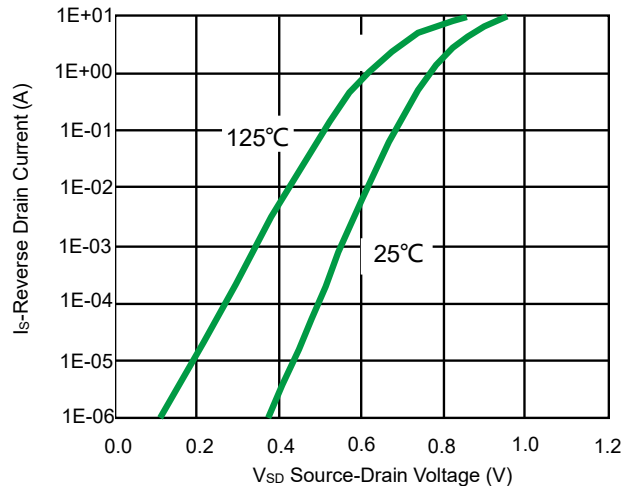


Fig 12. Source-Drain Diode Forward

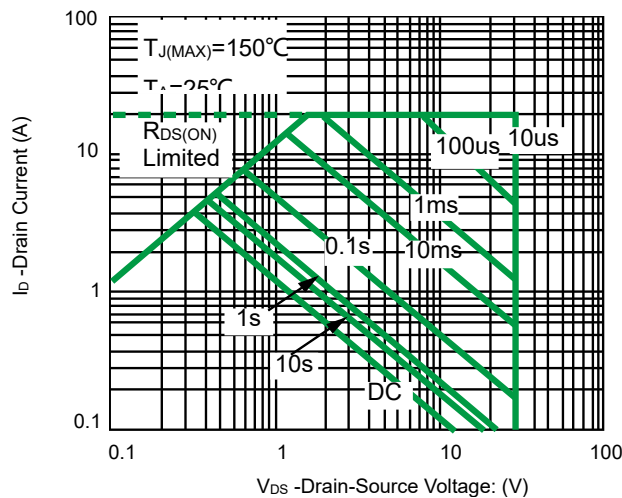


Fig 13. Safe Operation Area

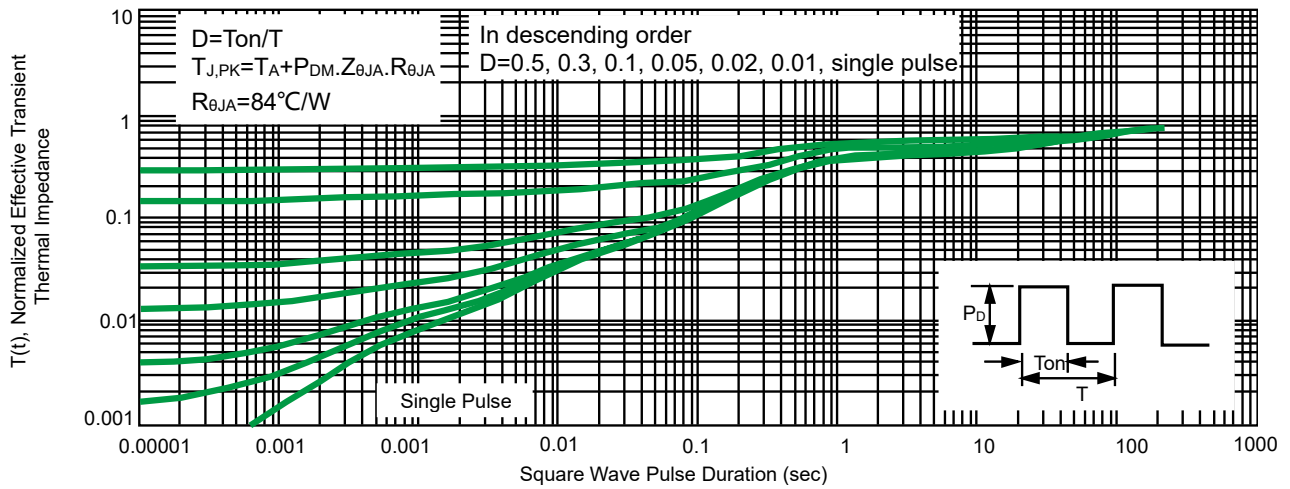
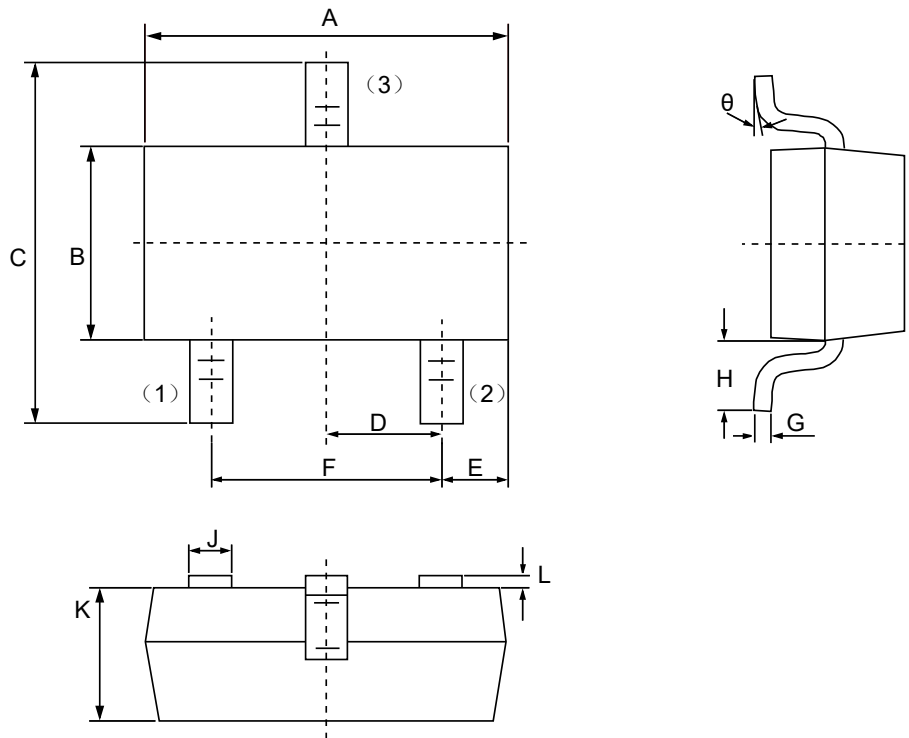


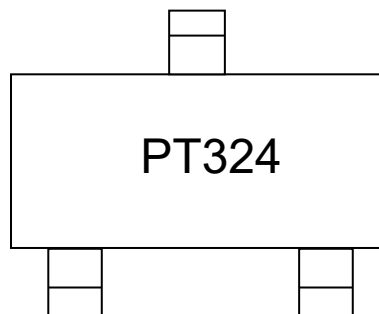
Fig 14. Normalized Maximum Transient Thermal Impedance

Product dimension(SOT-23)



Dim	Millimeters		Inches	
	MIN	MAX	MIN	MAX
A	2.80	3.00	0.1102	0.1197
B	1.20	1.40	0.0472	0.0551
C	2.10	2.50	0.0830	0.0984
D	0.89	1.02	0.0350	0.0401
E	0.45	0.60	0.0177	0.0236
F	1.78	2.04	0.0701	0.0807
G	0.085	0.177	0.0034	0.0070
H	0.45	0.60	0.0180	0.0236
J	0.37	0.50	0.0150	0.0200
K	0.89	1.11	0.0350	0.0440
L	0.013	0.100	0.0005	0.0040
θ	0°	10°	0°	10°


Marking Information



Ordering information

Device	Package	Reel	MPQ
PPMT32V4	SOT-23	7"	3000/ Tape & Reel


IMPORTANT NOTICE

 and **Prisemi**[®] are registered trademarks of **Prisemi Electronics Co., Ltd (Prisemi)** ,Prisemi reserves the right to make changes without further notice to any products herein. Prisemi makes no warranty, representation or guarantee regarding the suitability of its products for any particular purpose, nor does Prisemi assume any liability arising out of the application or use of any product or circuit, and specifically disclaims any and all liability, including without limitation special, consequential or incidental damages. “Typical” parameters which may be provided in Prisemi data sheets and/or specifications can and do vary in different applications and actual performance may vary over time. All operating parameters, including “Typicals” must be validated for each customer application by customer’s technical experts. Prisemi does not convey any license under its patent rights nor the rights of others. The products listed in this document are designed to be used with ordinary electronic equipment or devices, Should you intend to use these products with equipment or devices which require an extremely high level of reliability and the malfunction of with would directly endanger human life (such as medical instruments, aerospace machinery, nuclear-reactor controllers, fuel controllers and other safety devices), please be sure to consult with our sales representative in advance.

Website: <http://www.prisemi.com>

For additional information, please contact your local Sales Representative.

©Copyright 2009, Prisemi Electronics

 **Prisemi**[®] is a registered trademark of Prisemi Electronics.

All rights are reserved.